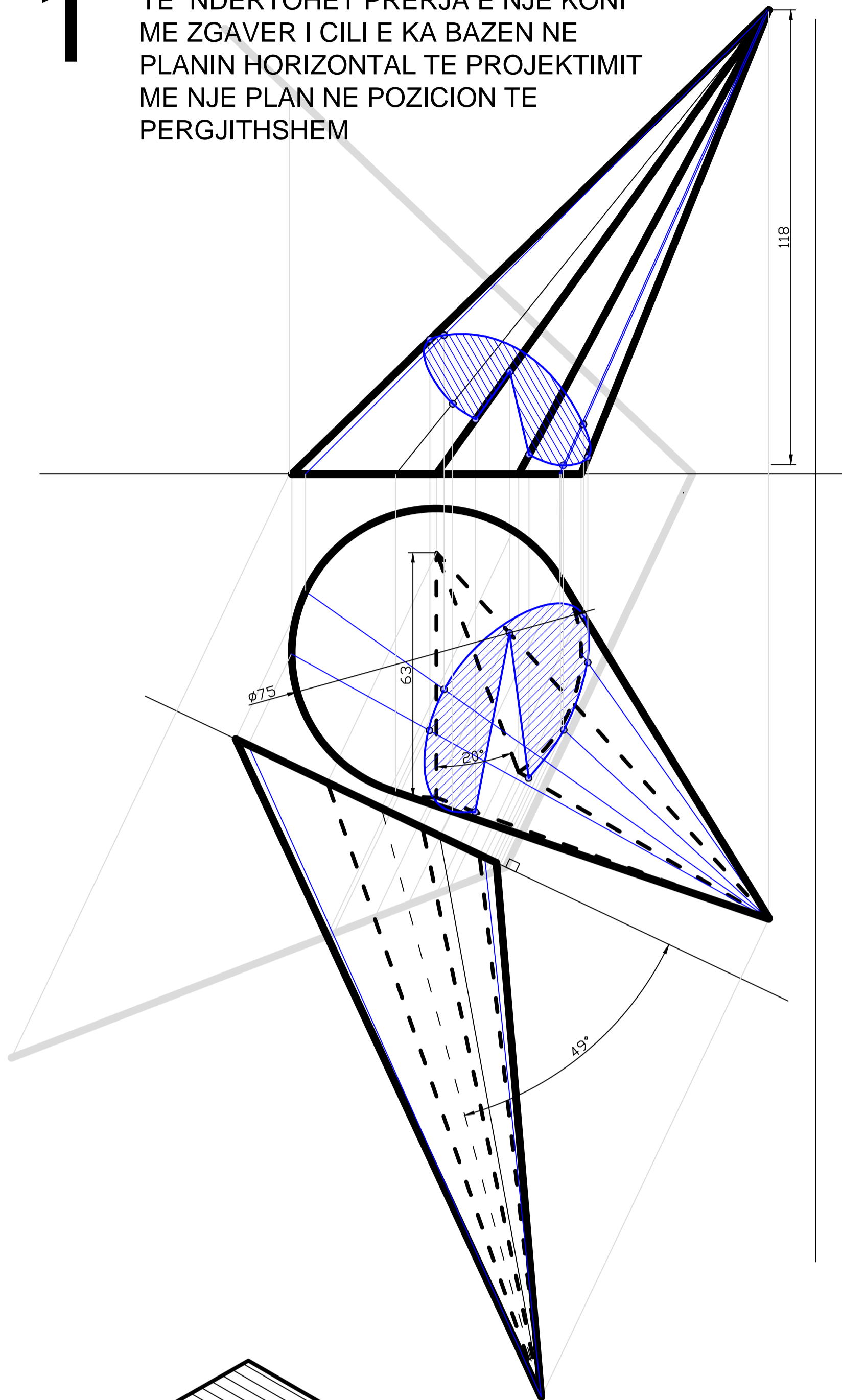
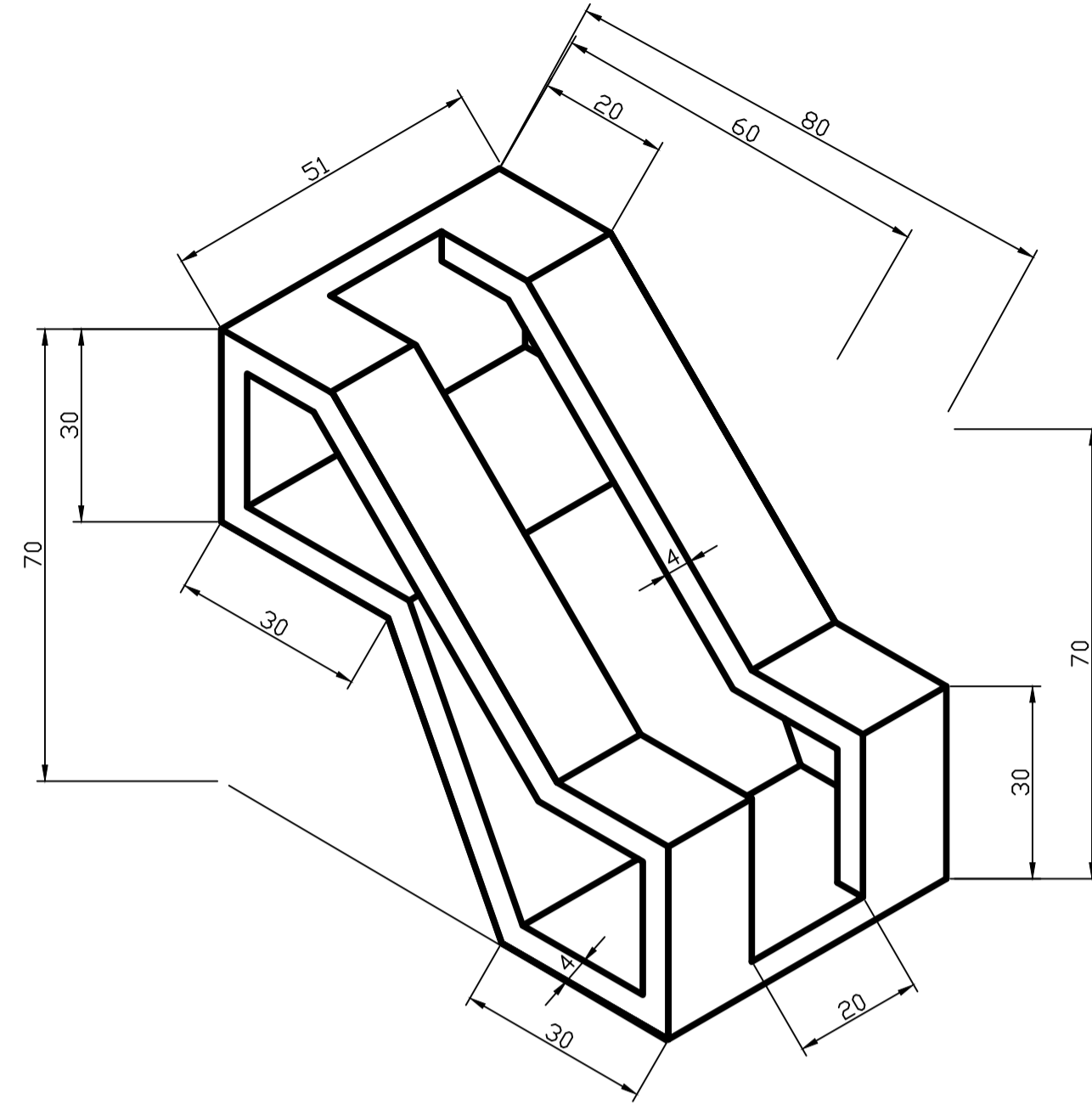


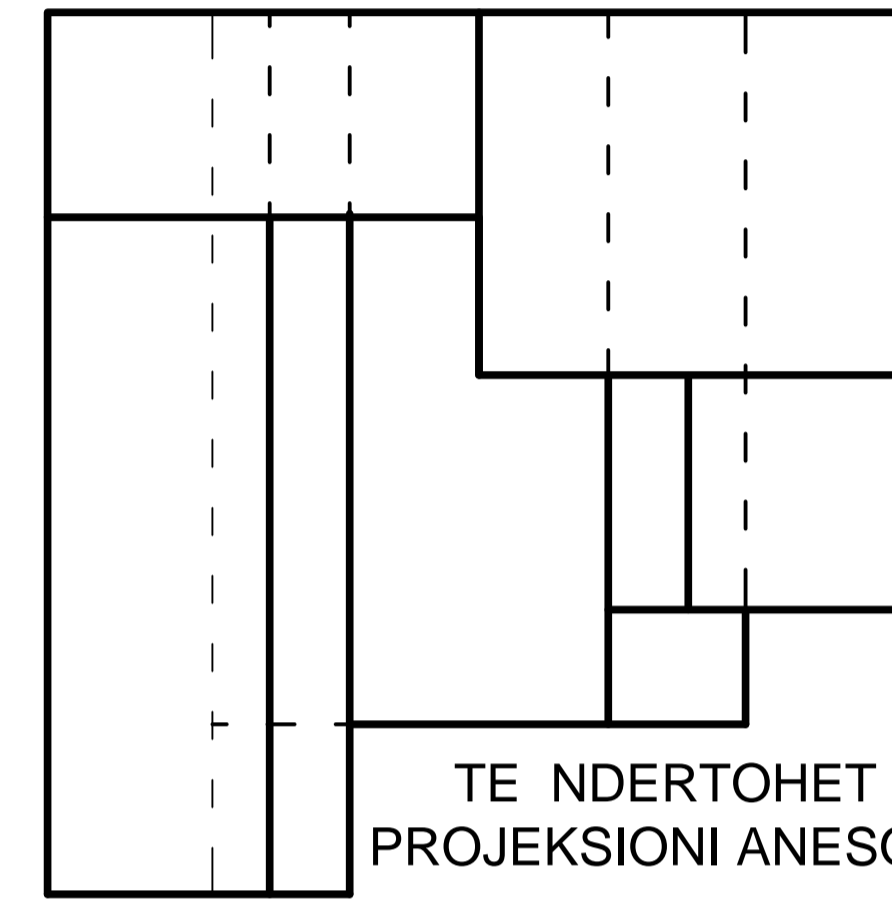
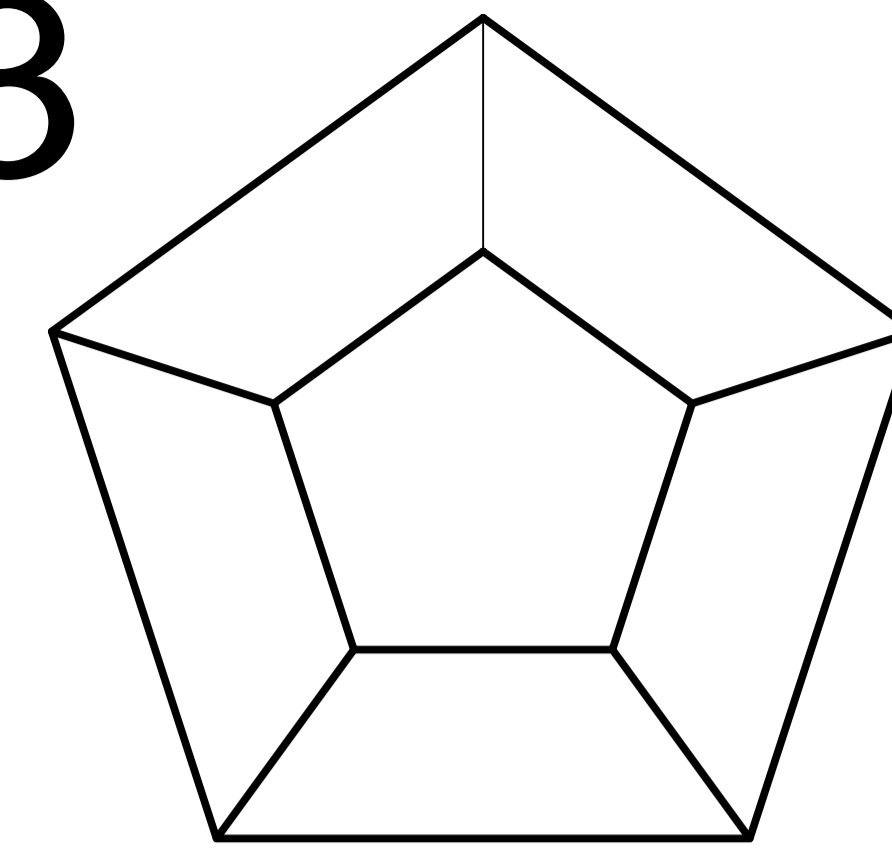
**1** TE NDERTOHEH PRERJA E NJE KONI ME ZGAVER I CILI E KA BAZEN NE PLANIN HORIZONTAL TE PROJEKTIMIT ME NJE PLAN NE POZICION TE PERGJITHSHEM



**2** TE NDERTOHEH TRE PAMJET E TRUPIT SIPAS PERMASAVE TE DHENA NE FIGURE



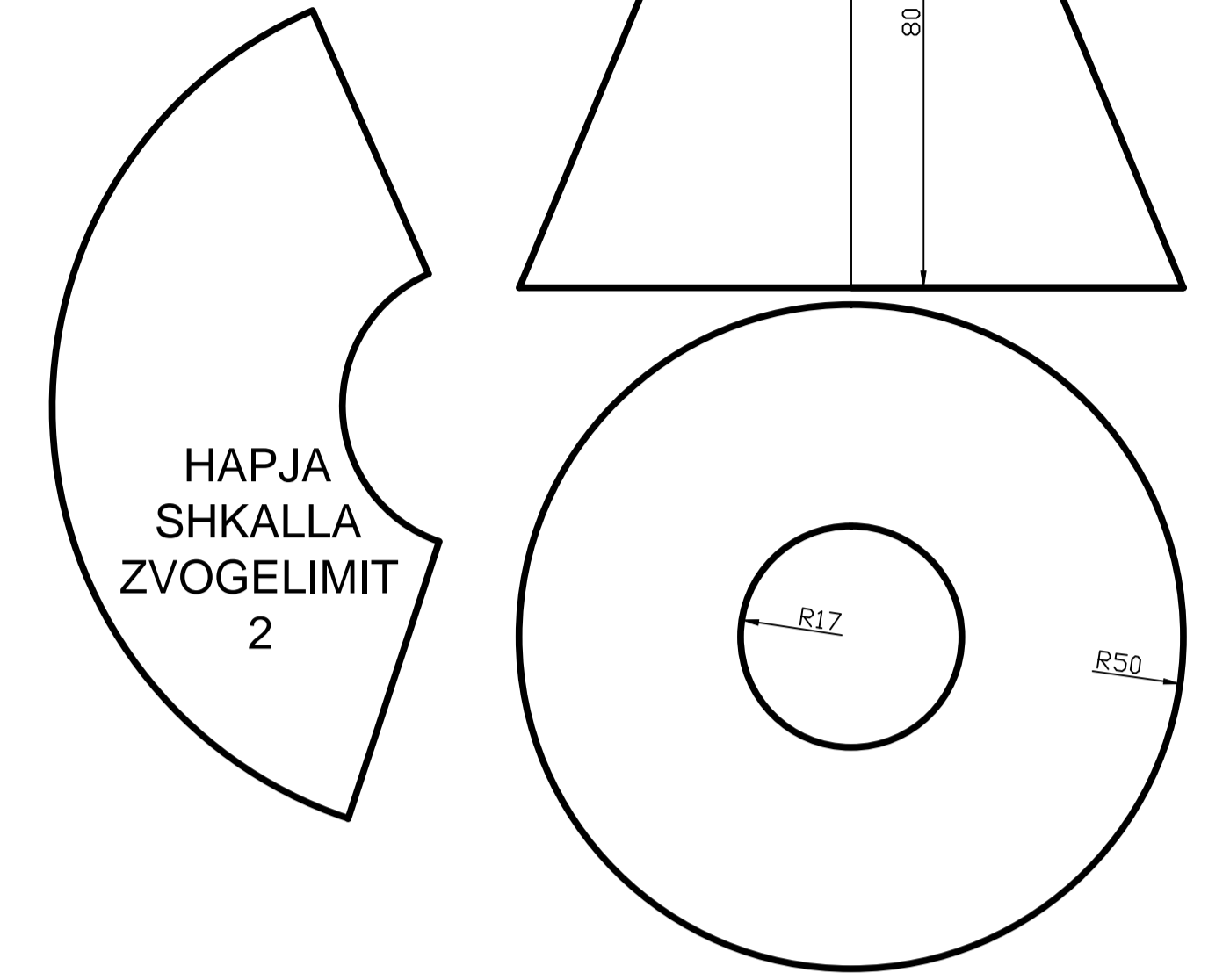
**3**



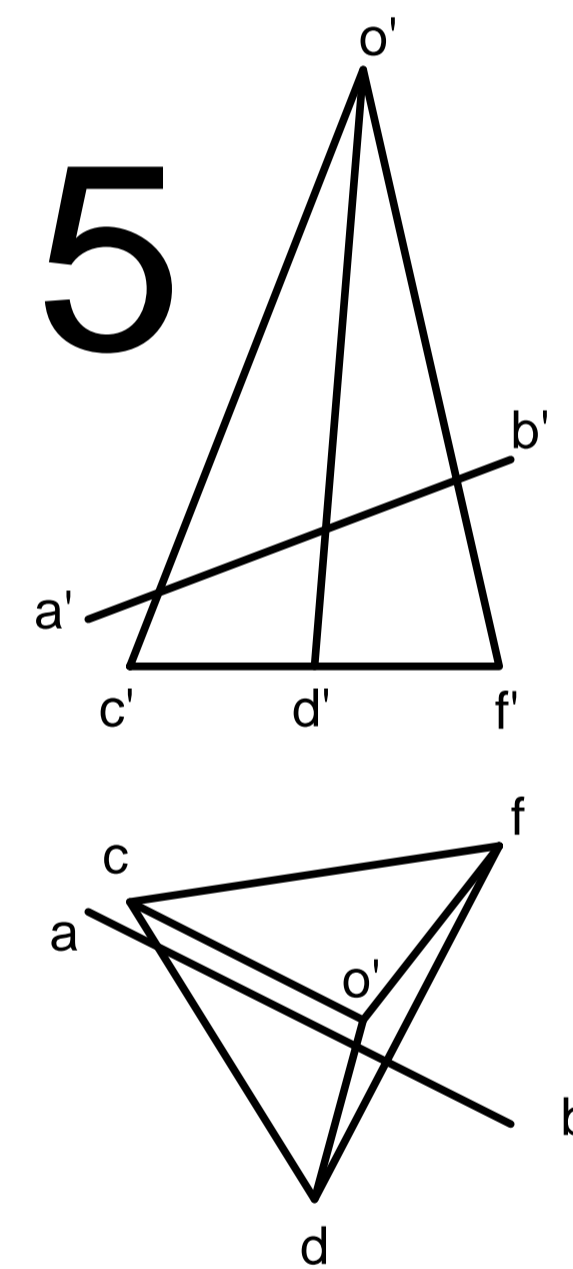
TE NDERTOHEH PROJEKSIONI ANESOR

**4**

TE REALIZOHET HAPJA E TRUNGUT TE KONIT SIPAS PERMASAVE TE DHENA NE FIGURE



**5**

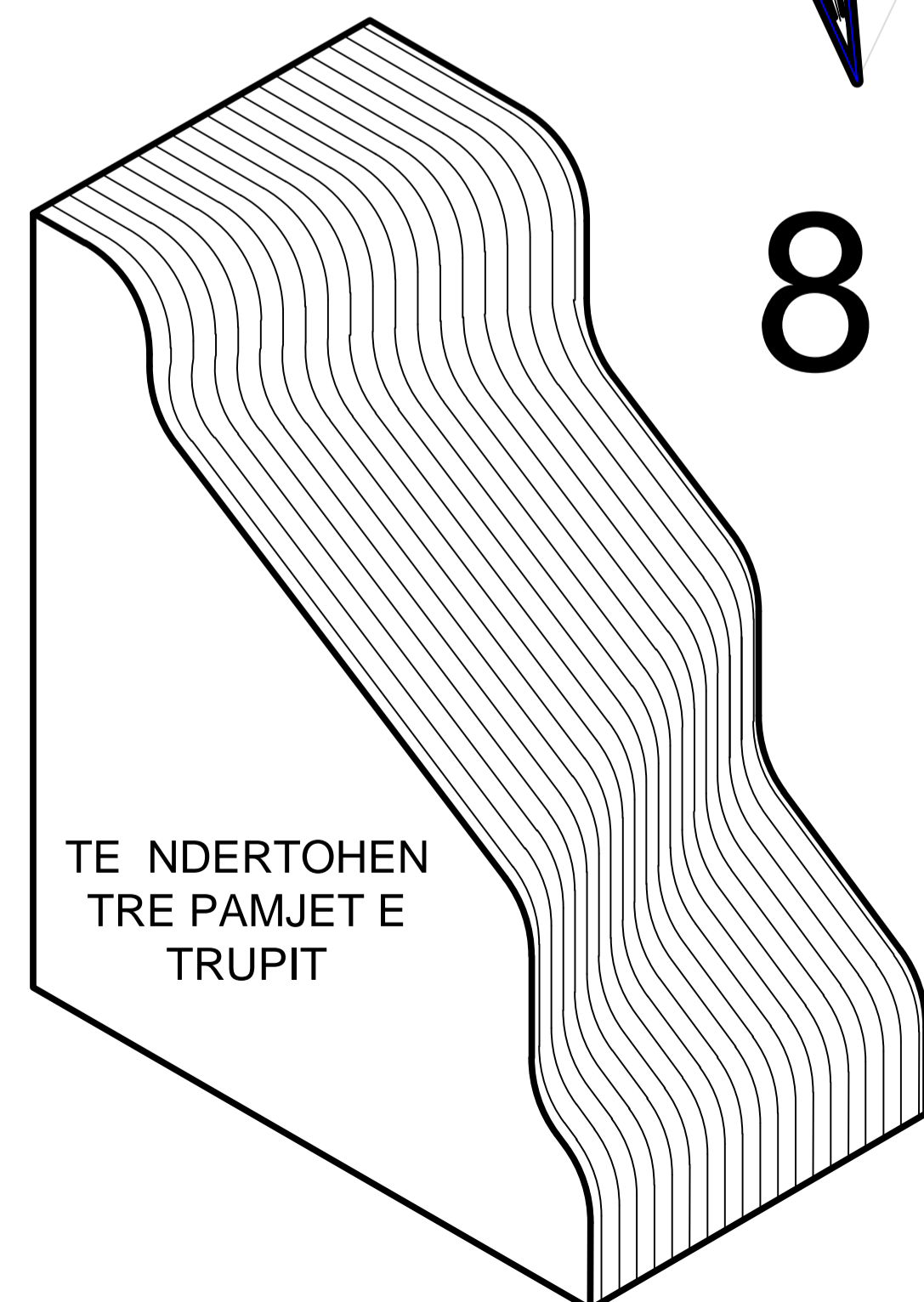
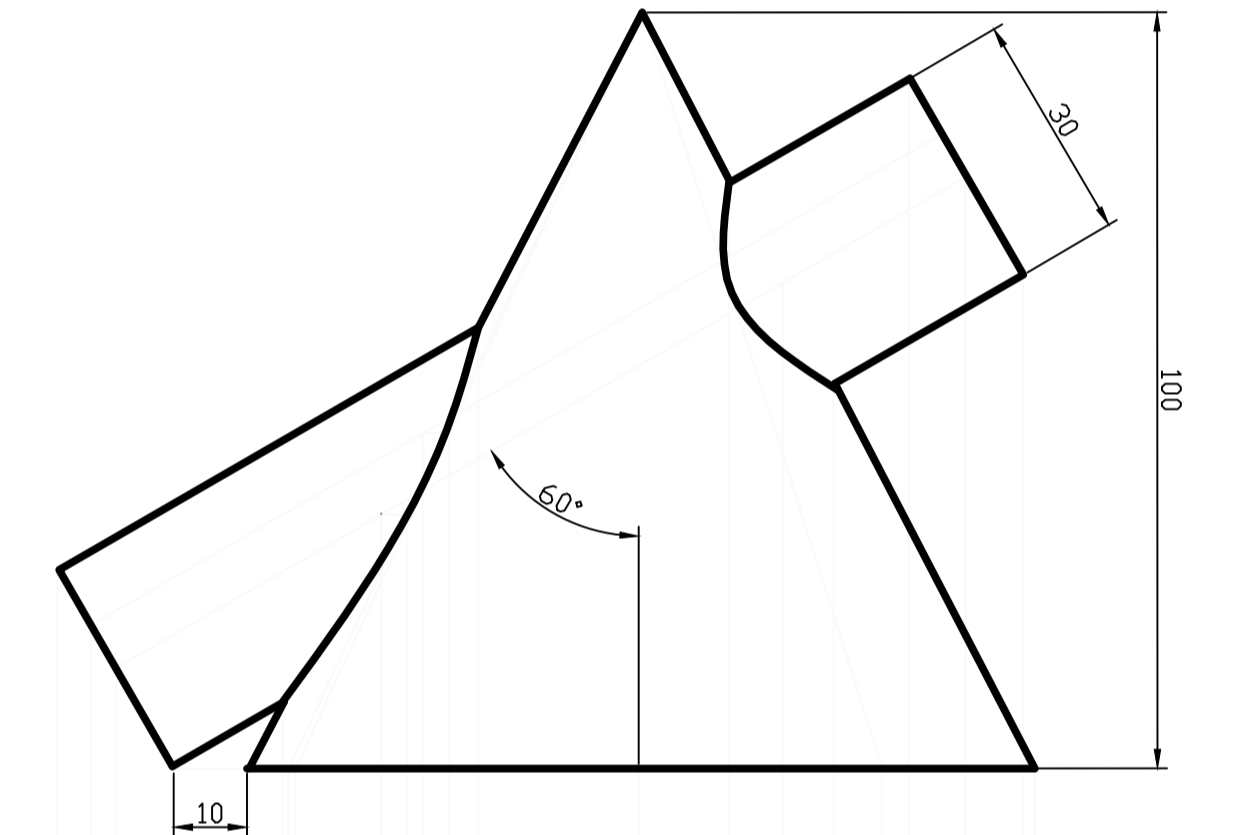


TE NDERTOHEH PROJEKSIONET E PIKAVE TE PRERJES SE DREJTEZES AB ME PIRAMIDEN OCDF DUKE JU REFERUAR FIGURES SE DHENE

**6**

TE NDERTOHEH AKSONOMETRIA IZOMETRIKE E RETHIT ME DIAMETER 30 MM NE TE TRE PLANET E PROJEKTIMIT BALLOR, HORIZONATL, ANESOR

**7**



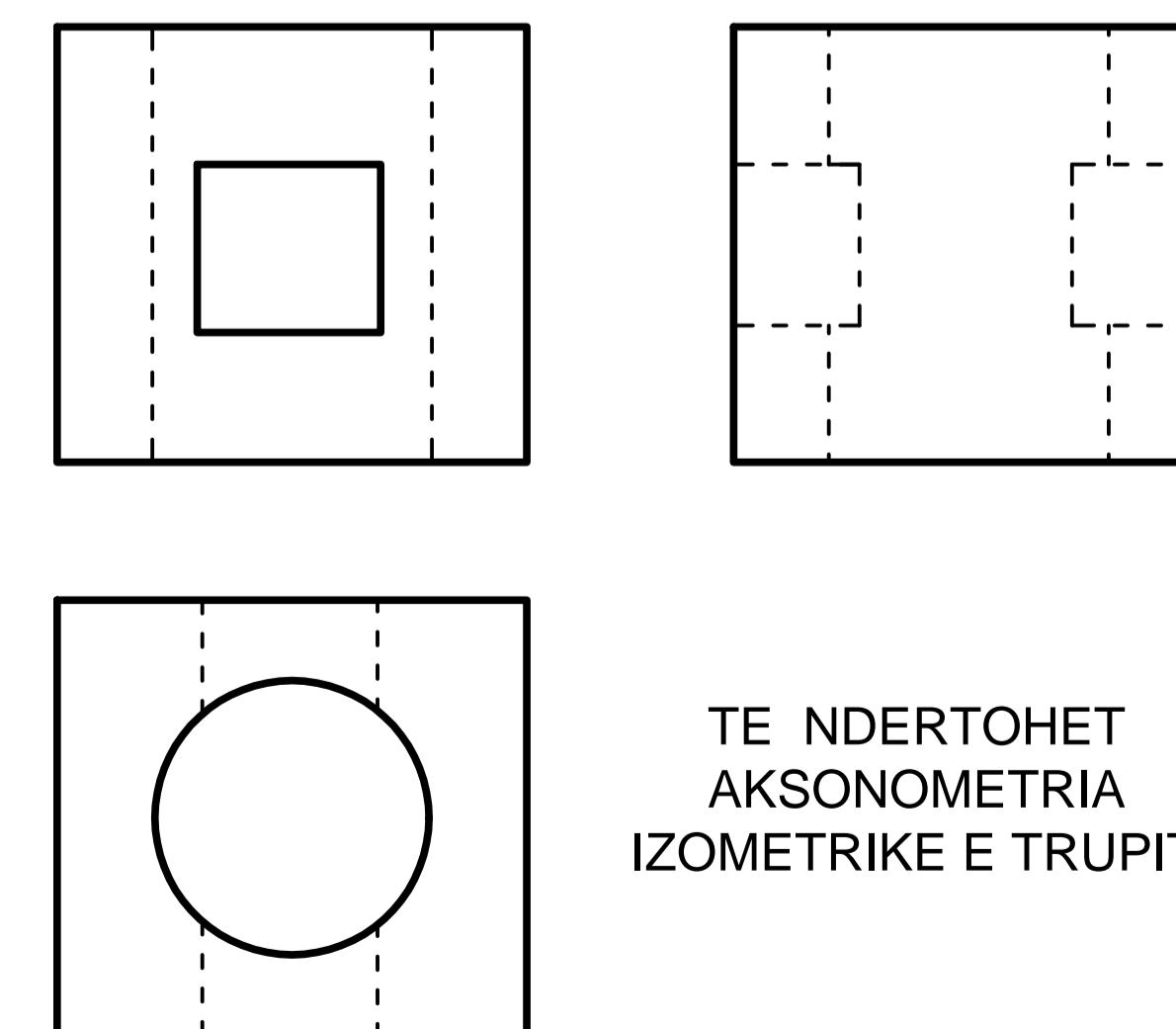
**8**

TE NDERTOHEH TRE PAMJET E TRUPIT

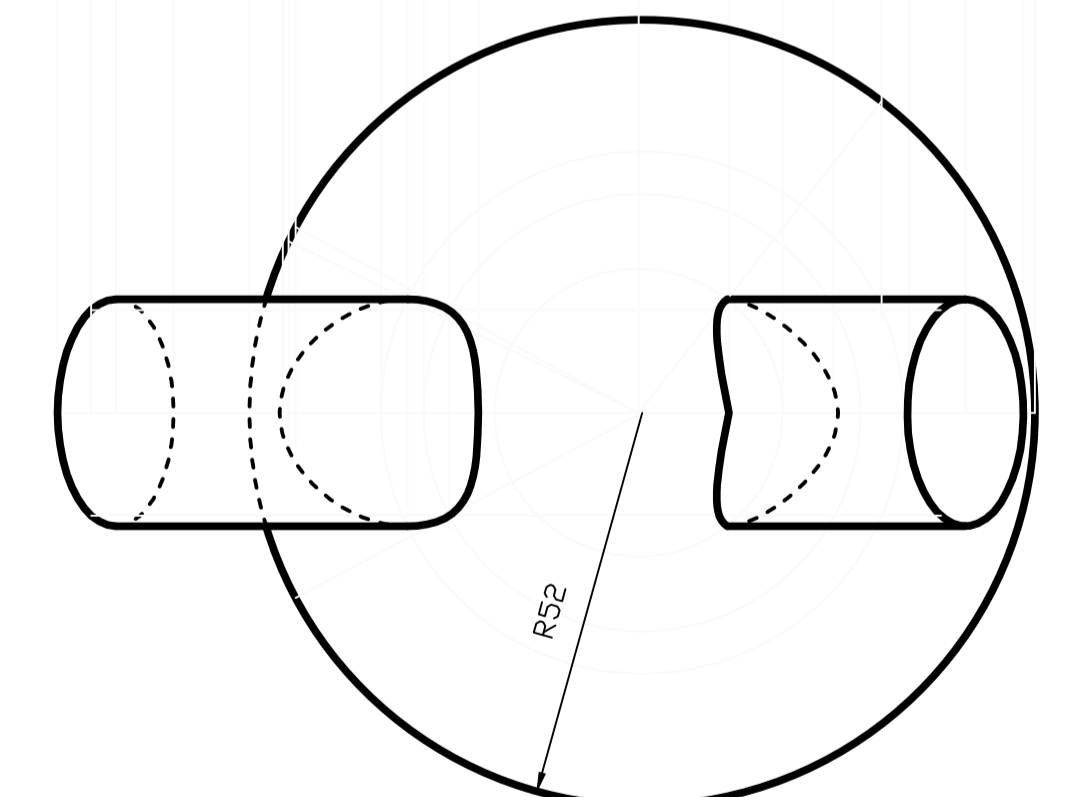
**9**

TE NDERTOHEH PROJEKSIONET E PIRAMIDES ME BAZE KATROR ME BRINJE 50MM, ME BAZE NE PLANIN HORIZONTAL TE PROJEKTIMIT E CPUAR NGA NJE CILINDER ME DIAMETER 20 MM. AKSI I CILINDRIT DHE PIRAMIDES JANE TE PERPETHUTA

**10**



TE NDERTOHEH AKSONOMETRIA IZOMETRIKE E TRUPIT



TE REALIZOHET PRERJA E KONIT ME CILINDRIT SIPAS PERMASAVE TE DHENA

SH 1:1	TRUPI 3D		Kursi I 2012
Punoj Pranoj	M. Tafaj E. Sheshi		U. P. T. FAKULTETI GJEOINXHINJER